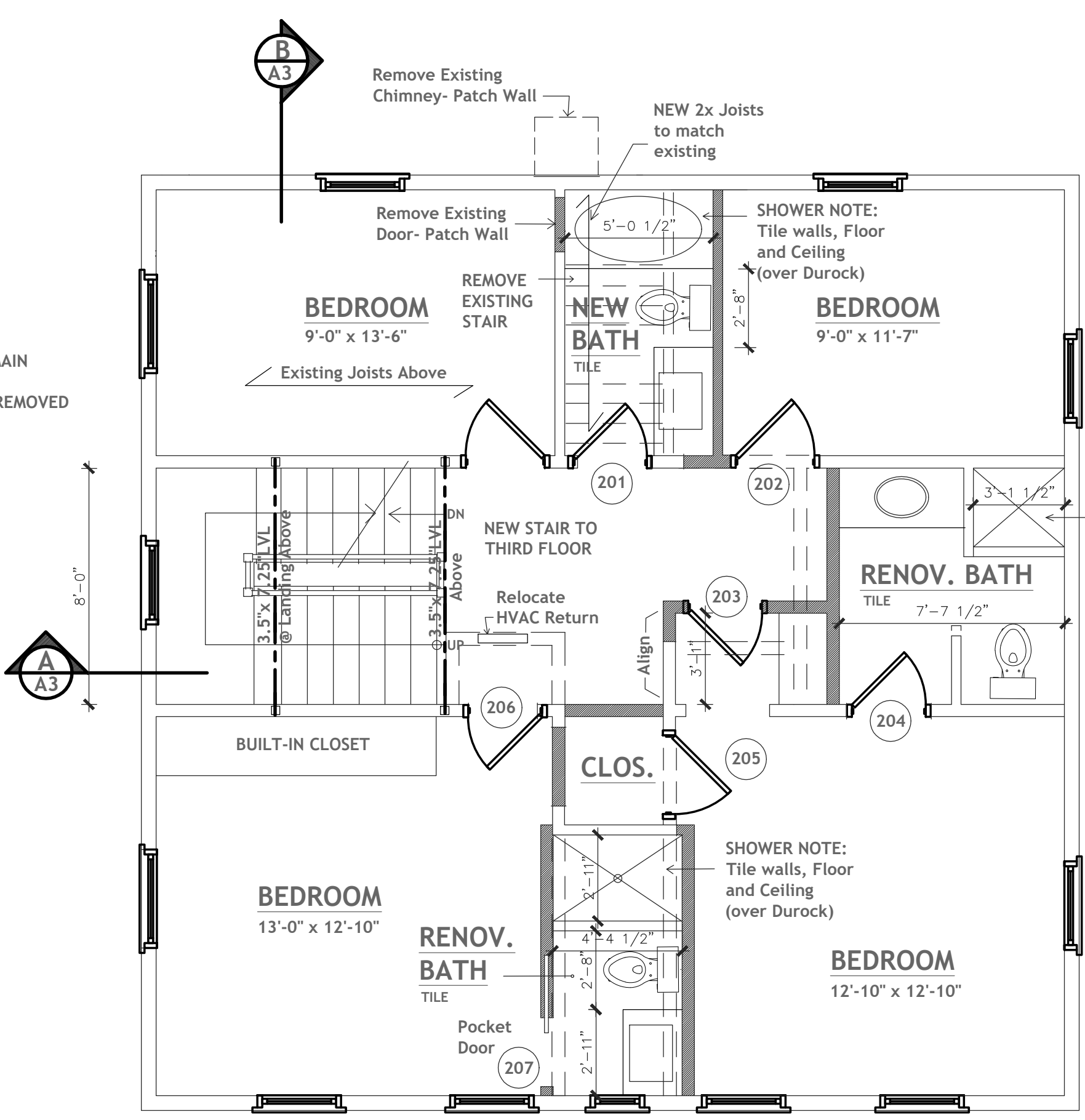


ATTIC PLAN
Scale: 1/4" = 1'-0"

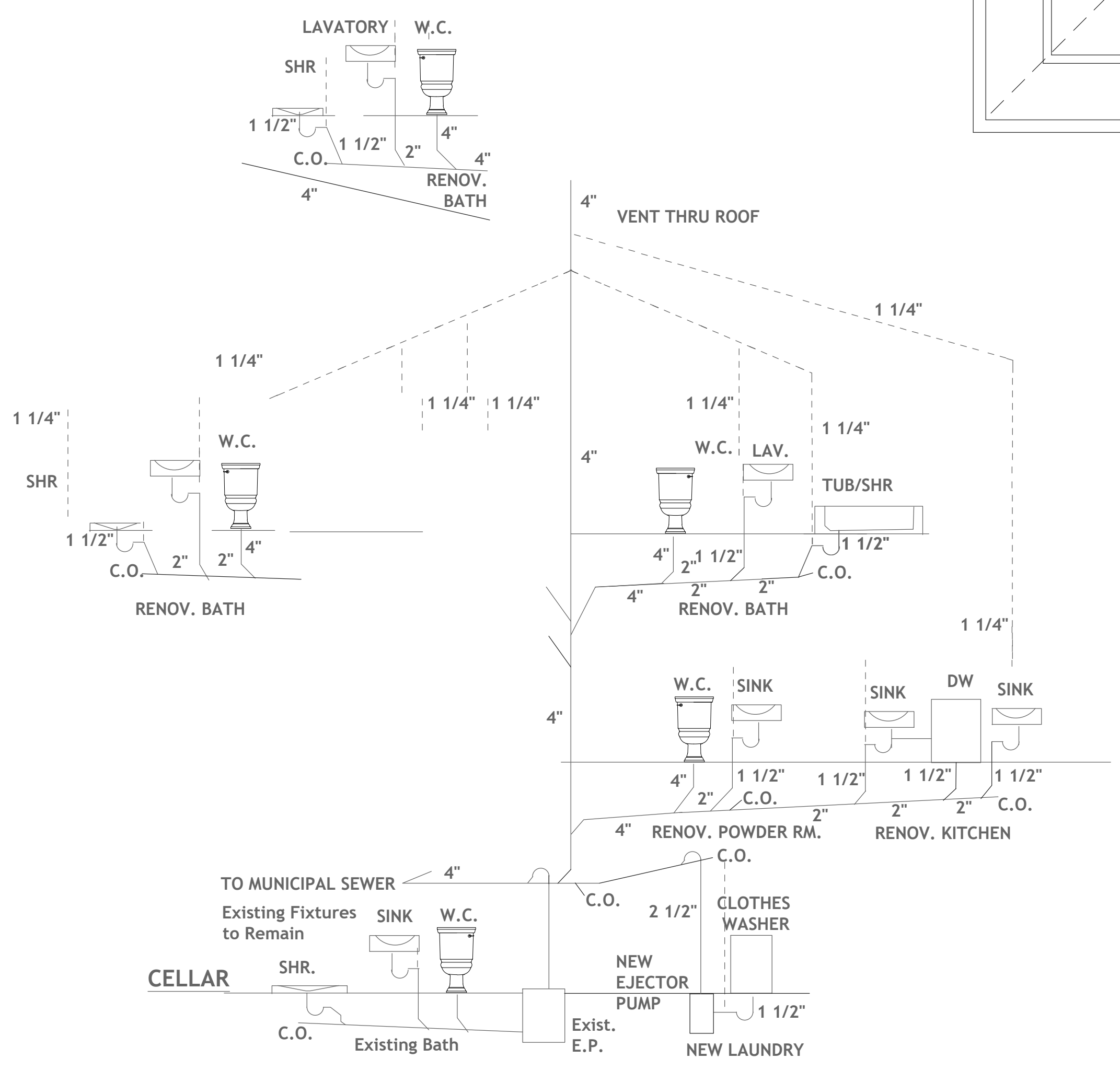
Second floor AREA 1000 SF
Third floor Allowable: 333 SF
Third floor existing: 400 sf
Third floor proposed: 462 sf

WALL LEGEND
 ——— EXISTING WALL TO REMAIN
 - - - EXISTING WALL TO BE REMOVED
 ■■■ NEW FRAME WALL



SECOND FLOOR PLAN
Scale: 1/4" = 1'-0"

Second floor AREA 1000 SF
Third floor Allowable: 333 SF



SANITARY RISER DIAGRAM

DOOR SCHEDULE

No.	Width	Height	Type/Material	Hardware	Remarks
001	2'-8"	6'-4"	Panel/ Masonite		
002					
003					
004					
005					
006					
007					
008					
101	2'-0"	6'-8"	Panel/ Masonite		
102	2'-8"	6'-8"	Panel/ Masonite		
103	2'-6"	6'-8"	Panel/ Masonite		
201	2'-4"	6'-8"	Panel/ Masonite		
202	2'-8"	6'-8"	Panel/ Masonite		
203	2'-8"	6'-8"	Panel/ Masonite		
204	2'-6"	6'-8"	Panel/ Masonite		
205	2'-4"	6'-8"	Panel/ Masonite		
206	2'-8"	6'-8"	Panel/ Masonite		
207	2'-6"	6'-8"	Panel/ Masonite		

201
202
203
204
205
206
207

DATE: 5.3.21

PROJECT NUMBER :

NORTH

NJ LIC. #10526
NY LIC. #028908-1

CDZ ARCHITECTS, LLC.
PROFESSIONAL CORPORATION EXPRESSLY RESERVES ITS COMMON
LAW COPYRIGHT AND OTHER PROPERTY RIGHTS IN THESE
PLANS. THESE DOCUMENTS ARE NOT TO BE REPRODUCED,
CHANGED, OR COPIED IN ANY FORM OR MANNER WHATSOEVER
NOR ARE THEY TO BE ASSIGNED TO A THIRD PARTY WITHOUT
FIRST OBTAINING THE EXPRESSED WRITTEN PERMISSION OF CDZ
ARCHITECTS, LLC.

ALTERATIONS:
SALAME RESIDENCE
111 NORWOOD AVENUE
DEAL, NJ

CDZ ARCHITECTS, LLC
58 RECKLESS PLACE
RED BANK, NJ 07701
P: 732-219-0061
F: 732-219-0065

SECOND FLOOR & ATTIC

DRAWN BY : JS

A-2