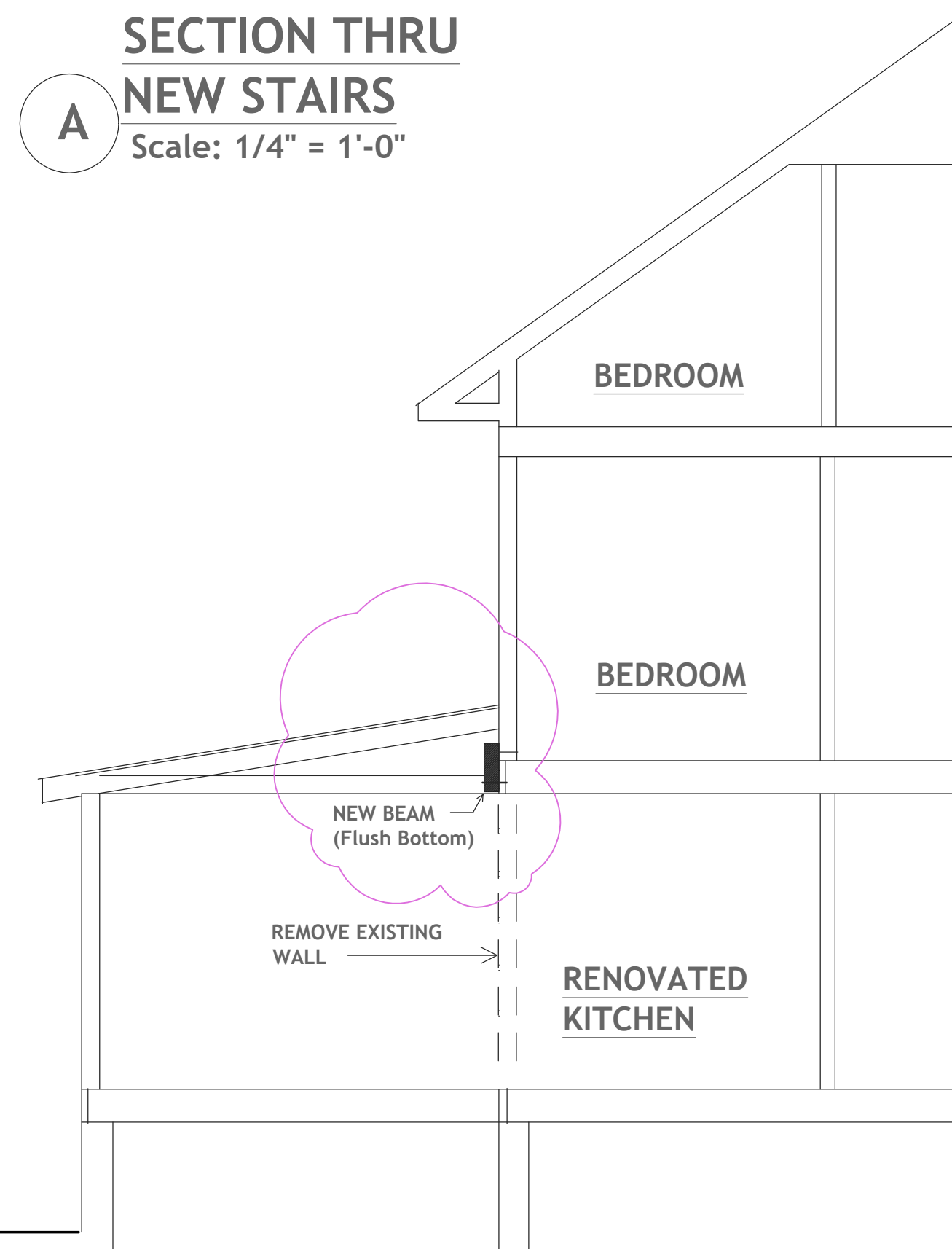


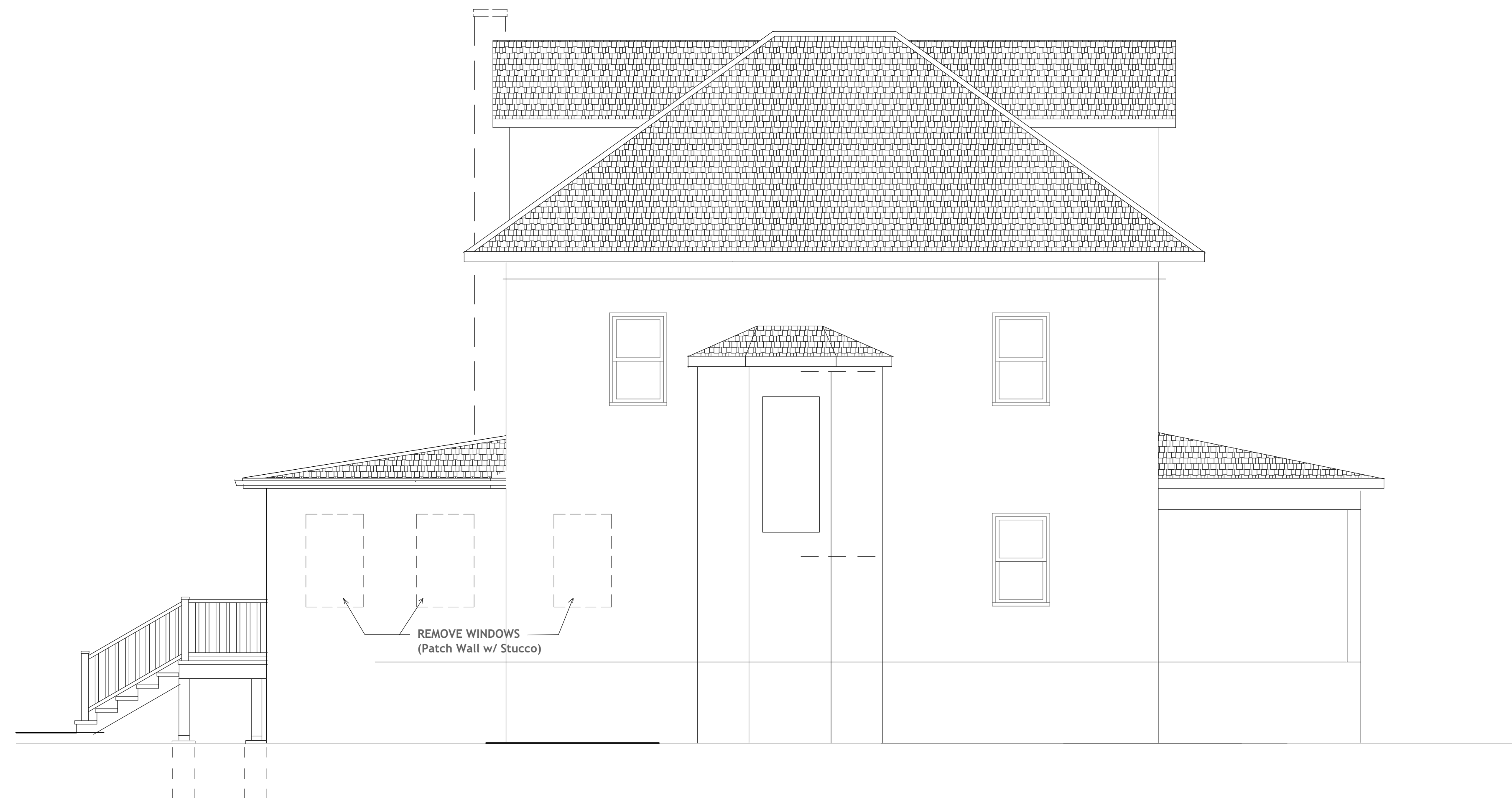
**REAR ELEVATION**  
Scale: 1/4" = 1'-0"



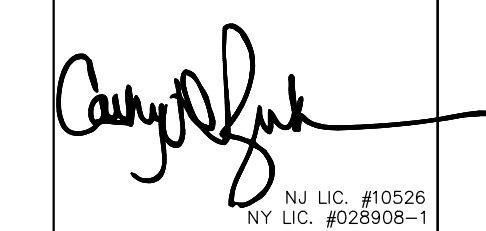

**SIDE ELEVATION**  
Scale: 1/4" = 1'-0"



**SECTION THRU NEW KITCHEN BEAM**  
Scale: 1/4" = 1'-0"



**SIDE ELEVATION**  
Scale: 1/4" = 1'-0"

|  |   |
|--|---|
| REVISIONS :  |   |
| PROJECT NUMBER :   |   |
| <br><small>NJ LIC. #10526<br/>NY LIC. #028908-1</small>   |   |
| NORTH  |   |
| <small>CDZ ARCHITECTS, LLC, PROFESSIONAL CORPORATION EXPRESSLY RESERVES ITS COMMON LAW COPYRIGHT AND OTHER PROPERTY RIGHTS IN THESE PLANS. THESE DOCUMENTS ARE NOT TO BE REPRODUCED, CHANGED, OR COPIED IN ANY FORM OR MANNER WHATSOEVER NOR ARE THEY TO BE ASSIGNED TO A THIRD PARTY WITHOUT FIRST OBTAINING THE EXPRESSED WRITTEN PERMISSION OF CDZ ARCHITECTS, LLC.</small> |   |
| ALTERATIONS:   |   |
| SALAME RESIDENCE<br>111 NORWOOD AVENUE<br>DEAL NJ  |   |
|   | <small>CDZ ARCHITECTS, LLC<br/>58 RECKLESS PLACE<br/>RED BANK, NJ 07701<br/>P: 732-219-0061<br/>F: 732-219-0065</small> |
| ELEVATIONS & SECTIONS  |   |
| DRAWN BY : JS  | A-3   |